

Cooperative Connections



**New Solar
Coming to S.D.**

Page 8

**Saving Lives:
Grain Bin
Safety**

Page 12

Electricity Brings Everyday Value



Rodney Haag

rhaag@oaheelectric.com

Even though I work in the energy industry, like most people, I still don't think much about the electricity I use. I expect the lights to turn on when I flip the switch and the coffeemaker to work each morning. Because electricity is so abundant, we don't think much about it. Since many of us have been spending more time at home over the past few months, we have likely been using more energy. And yet, we still expect an endless supply of power with uninterrupted service 24/7. The only time we really think about electricity is when the power goes out or perhaps when the monthly bill arrives.

Given how electricity powers our modern lifestyle every day, it's a great value, especially when compared to other common services and expenses. For example, think back to the cost of a gallon of gasoline 20 years ago. Consider the cost of groceries or a cup of your favorite specialty coffee from a few years back. In comparison, the cost of electricity has remained largely flat, unlike most other consumer goods.

Like many of you, I have a cell phone to stay connected, and I subscribe to cable channels so I can enjoy more viewing options. Many of us consider these necessities for modern day life. We can see what we're getting for our money, and we pay the price for those services. In contrast, when we use electricity, we don't necessarily "see" all that we're getting for our money.

But considering what electricity does for us, it's a tremendous value for our quality of life as well as our budgets. For comparison, consider that the average rent increase was nearly 4 percent (from 2014-2019) according to the Bureau of Labor Statistics Consumer Price Index (CPI). The cost of medical care was increased 3 percent during this time, and education was not too far behind at 2.6 percent. So, where did electricity rank? According to the CPI, electricity increased by less than half a percentage point, 0.4 percent.

The bottom line: electricity brings everyday value. Considering that electricity is something that we all use around the clock, I'm very proud of our track record. At the same time, we are striving to increase our service reliability, reduce those brief interruptions and reduce costs. We are continually working to improve our operations to ensure a smarter grid and exploring more renewable energy options where possible.

Oahe Electric Cooperative provides the reliable service you expect and deserve as valued members of the co-op. And as your trusted energy advisor, we want to help you save energy and money.

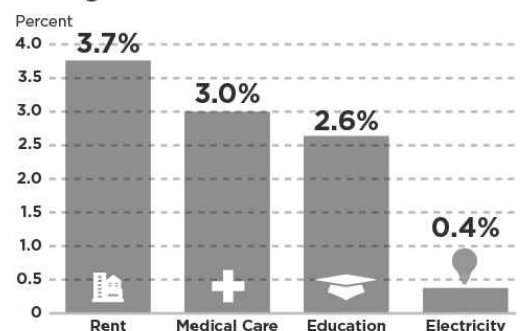
We recognize that the past few months have been challenging for many of our members and we're here to help. If you have questions about your account or are looking for ways to save energy at home, please give us a call. Oahe Electric is your electric co-op and our sole purpose is to serve you and the needs of our community. That's everyday value.

And as your trusted energy advisor, we want to help you save energy and money.

ELECTRICITY REMAINS A GOOD VALUE

When you look at price increases of common expenses over the last five years, it's easy to see electricity remains a good value!

Average Annual Price Increase 2014-2019



Oahe Electric Cooperative Connections

(USPS No. 019-042)

Editors

Russ Hohn and Sam Irvine

General Manager

Rodney Haag

Oahe Electric Board of Directors

President

Ken Gillaspie, 280-5015

Vice President

James Feller, 962-6207

Secretary

Ross Sperry, 962-6141

Treasurer

Blaine Livermont, 945-2910

Assistant Secretary

Kirk Yackley, 605-258-2412

Attorney

David Larson

OAHE ELECTRIC COOPERATIVE CONNECTIONS is published monthly by Oahe Electric Cooperative, Inc., PO Box 216, 102 S. Canford, Blunt, SD 57522, for its members. Families subscribe to Oahe Electric Cooperative Connections as part of their electric cooperative membership. Oahe Electric Cooperative Connections' purpose is to provide reliable, helpful information to Oahe Electric Cooperative members on matters pertaining to rural electrification and better rural living. Subscription information: Electric cooperative members devote 50 cents from their monthly electric payments for a subscription. Nonmember subscriptions are available for \$12 annually. Periodicals Postage Paid at Blunt, SD 57522 and at additional mailing offices.

POSTMASTER: Send address changes to Oahe Electric Cooperative Connections, PO Box 216, Blunt, SD 57522-0216; telephone (605) 962-6243; fax (605) 962-6306; e-mail oahe@oaheelectric.com; www.oaheelectric.com

Our Mission

Oahe Electric delivers high quality, low-cost electric service to our local member-owners. As a Touchstone Energy® Cooperative, we are committed to meeting the highest standards of customer satisfaction. We do business with accountability, integrity, innovation and commitment to community. As an electric co-op, we are part of America's most trusted network of high quality energy providers.

Storm Season Safety



Russell Hohn

Member Services Advisor
rhohn@oaheelectric.com

Residents in South Dakota are accustomed to dealing with storms. Summer or winter seasons can produce weather that is dangerous. Add to the mix of a severe storm overhead or underground power lines or high voltage equipment, and you find yourself in a dangerous situation.

For decades, Oahe Electric Cooperative has traveled to schools and social events to educate youth and adults on the dangers associated with power lines. Cooperative members and area residents often forget what to do when involved with power line accidents. Most people will want to help those involved, but getting too close can be a fatal mistake.

Vehicles and farm machinery top the list for accidents involving power lines. Drivers/operators are not paying attention to their surroundings and more accidents are happening each year. Farm machinery continues to get bigger. Entries or approaches into farm fields often have overhead power lines directly above in which your equipment **MUST PASS UNDERNEATH. PLEASE CONTACT OAHE ELECTRIC COOPERATIVE** if you have concerns regarding this scenario.

Underground utility equipment can be altered from original placement during a storm. Heavy rain can cause the green boxes to move. If you notice equipment that looks altered in appearance, **DO NOT APPROACH! PLEASE CONTACT OAHE ELECTRIC COOPERATIVE** and share your concerns.

Strong winds can often entangle tree branches or other debris in overhead powerlines. If you see something concerning, **PLEASE CONTACT OAHE ELECTRIC COOPERATIVE**. Do not attempt to remove the debris or items yourself.

The voltage on Oahe Electric's power line system is 14,400/24,940 volts. The voltage in your residence is 120/240 volts. Each year, many people are severely injured or killed when the accident involves electrical equipment at their residence. If you witness someone involved in this type of accident **DO NOT APPROACH THEM!** If you know where the disconnect for power is located, use this device to shut off electricity inside the home. The best practice is to call **OAHE ELECTRIC COOPERATIVE** and give details as to what is happening and where you are at.

The human body is a very good conductor of electricity. That is why you **DO NOT APPROACH** anyone or anything involved in an electrical accident! Vehicles and farm equipment involved in power line accidents are often energized at this high voltage, **DO NOT APPROACH!** Stay a safe distance away and call for help. At times, those making the call for help are extremely anxious. Remember, the more accurate your information as to what is going on and where you're located is key to responders. Educate your children about this also. Make sure they give the best location possible. This ensures the line person will drive directly to that premise.

Roofing repairs can be very dangerous if a power line is nearby. Ladders and aerial equipment are often used and, remember, any metal is a very good conductor of electricity. Building construction when overhead power line or underground power line is near to building site is very dangerous. Remember to call 811 before you dig. This will inform all utilities of your construction site area, and utilities will then be located.

Everyone at Oahe Electric Cooperative wishes you a safe and happy summer!

Thank you for your continued patronage and support!

Focus on These Safe Practices Away From the Workplace

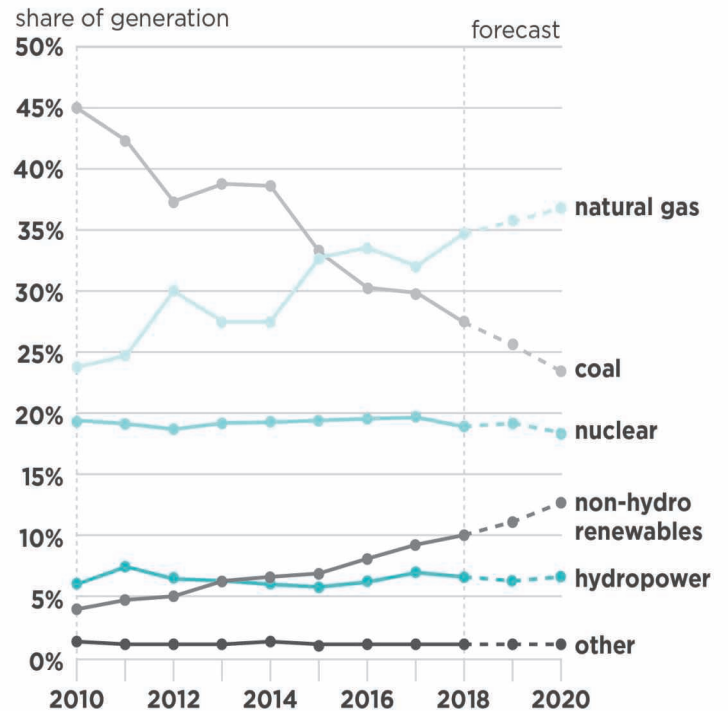
While your local electric cooperative often focuses on electrical safety and provides reminders to keep you free from harm, there are many other dangers lurking out there that don't necessarily pertain to electrical power.

Read on to see the National Safety Council's list of the top causes of preventable injuries and death away from the workplace. Keep these in mind and help protect you and your family from danger.

- **Poisoning.** In 2011, accidental poisonings overtook car crashes for the first time as the leading cause of unintentional injury-related death for all ages combined. Poisoning deaths are caused by gases, chemicals and other substances, but prescription drug overdose is by far the leading cause.
- **Vehicle crashes.** Roadway crashes are the second-leading cause of unintentional injury-related death overall in the U.S. Impaired driving, distracted driving, exceeding the speed limit and inexperience can often cause a life to be cut tragically short in the blink of an eye.
- **Falls.** Falling is the third-leading cause of unintentional injury-related death over all age groups across the country, but it's the No. 1 cause of death for those who are 65 and older who sometimes have health complications and problems with balancing.
- **Choking and suffocation.** Choking on food or other objects is a primary cause. Suffocation and choking rank higher among the elderly and infants.
- **Drowning.** This is the No. 1 cause of death for children ages 1-4, mostly due to children falling into pools or being left alone unattended in bathtubs.
- **Fires and burns.** Fires often start at night, when families are asleep and most vulnerable. A working smoke alarm will cut in half the chances of dying in a fire.
- **Natural and environmental incidents.** Weather-related disasters claim hundreds of lives per year. You should learn all you can about emergency preparedness and always have an emergency kit on hand.

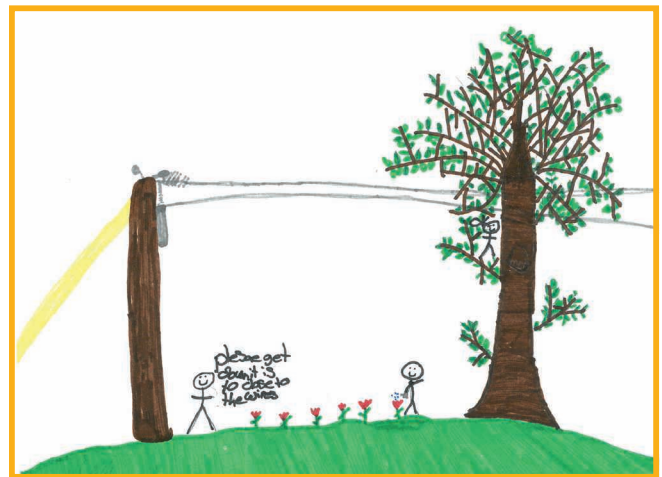
Source: National Safety Council

U.S. ELECTRICITY GENERATION BY ENERGY SOURCE (2010-2020)



Source: U.S. Energy Information Administration, *Short-Term Energy Outlook*, January 2019
 Note: Confidence interval derived from NYMEX options market information

KIDS CORNER SAFETY POSTER



"Please get down - it is too close to the wires!"

Forrest Hawk, 9 years old

Forrest Hawk is the grandson of Steve and Pru Hawk. They are members of Lacreek Electric Association, Inc., Martin, S.D.

Kids, send your drawing with an electrical safety tip to your local electric cooperative (address found on Page 3). If your poster is published, you'll receive a prize. All entries must include your name, age, mailing address and the names of your parents. Colored drawings are encouraged.



Protein-Packed Salads

Ranch, Bacon, Parmesan Salad

1 16 oz. Farfalle (bowtie) pasta	½ cup shredded Parmesan cheese
1 cup prepared ranch dressing	1 carrot, peeled and diced
6 slices bacon	1 stalk celery, diced
	1 red onion, diced

Fill large pot with lightly salted water, bring to rolling boil over high heat. Once water is boiling, stir in bow tie pasta and return to boil. Cook pasta uncovered, stirring occasionally, until pasta has cooked through, but still firm to the bite, about 12 mins. Drain well in a colander set in the sink. Transfer to a bowl, refrigerate until cool, at least 30 mins. Place bacon in a large, deep skillet, cook over med.-high heat, turning occasionally, until evenly browned, about 10 mins. Drain bacon slices on a paper towel-lined plate, let cool, and chop. In a large salad bowl, stir together the ranch dressing, bacon, Parmesan cheese, carrot, celery, and red onion. Lightly stir in cooled pasta to coat with dressing, and refrigerate 2 hours.

Cortney Reedy, Tea, SD

Rotini Salad

1 box rotini	sliced turkey, deli style
celery, green pepper, radishes, cucumber, onion, carrots	mushrooms, chopped
	cheddar cheese, shredded

Cook rotini as directed on package. Chop vegetables. Put all ingredients into a large bowl. Add 1 bottle zesty Italian dressing. Let chill, enjoy. Can add almost any fresh vegetable.

Mary Jessen, Holabird, SD

Broccoli Bacon Salad

Dressing:	2 T. vinegar
1 cup real mayo	Brown 1 pkg. bacon, break into pieces
¼ cup sugar	

Wash two fresh heads of broccoli and cut into bite size pieces. Add ½ cup raisins, ¼ cup purple onion, 1 cup shredded cheese, pepper to taste. Mix well.

Karen Jacobs, Tolstoy, SD

Ring Tuna Salad

1 pkg. ring macaroni cooked and drained	1 cup green olives sliced
4 green onions chopped	2 6 oz. cans Albacore tuna
1 cup frozen peas cooked and drained	2 T. salad dressing mixed with 1 tsp. olive oil

Cook, drain and cool macaroni. Mix first 5 ingredients then add salad dressing and olive oil, which has been whipped together. Store in refrigerator.

Darlene Price, Prairie City, SD

Chicken, Onion, Quinoa Salad

Dressing:	1 tsp. canola oil
¼ cup apple cider vinegar	1 white onion, sliced
2 T. olive oil	3 cups baby kale
1 T. lemon juice	1 red skinned apple, chopped
1 tsp. honey	2 cups cooked chicken, chopped
1 tsp. Dijon mustard	½ tsp. salt
1-½ cups red quinoa, rinsed	¼ tsp. pepper
2-½ cups vegetable broth	

To make the dressing: In a large bowl, whisk vinegar, olive oil, lemon juice, honey and Dijon mustard until well combined. Set aside. In a saucepan, bring quinoa and broth to boil. Simmer, covered, for 12-15 minutes, or until all of the broth has been absorbed. Let cool completely. In a medium skillet, heat canola oil over medium-high heat. Saute onion for 3-5 minutes, or until it is softened and translucent. Remove from heat; let cool completely. In a large bowl, toss onion, kale, apple, chicken, salt and pepper with dressing. Stir in cooled quinoa. www.onions-usa.org.

Please send your favorite vegetarian, garden produce and pasta recipes to your local electric cooperative (address found on Page 3). Each recipe printed will be entered into a drawing for a prize in December 2020. All entries must include your name, mailing address, telephone number and cooperative name.

Outages and Life Support Equipment

If someone in your household depends on in-home life support equipment, please notify us immediately. Oahe Electric maintains a record of members who use devices such as infant monitors, respirators and supplemental oxygen. These consumers are high priority during power restoration.

Because we cannot guarantee uninterrupted service, we strongly recommend these consumers have a backup power source and an emergency plan for extended power outages.

Members with special life-support needs should contact our office at 1-800-640-6243 and inform us of their situation so they can be included on our list.



Digging into some home improvement projects while social distancing?



Don't hit a buried utility line and disrupt internet or other utility services to your whole neighborhood. Call 811 or visit your states 811 website before digging. Call811.com/811-your-state

Energy Efficiency Tip of the Month

Installing a smart power strip is a quick and easy way to start saving money while making your home more energy efficient. Smart power strips can actually cut power off to save energy since they are able to detect when a device is in standby mode.

Source: energy.gov

Oahe Electric Director Elections to be Held

The annual meeting of the members of Oahe Electric Cooperative, Inc. will be held at the gymnasium in Onida, S.D., at 7 p.m. on **Oct. 3, 2020**.

During the annual meeting, the members present will be electing two board members to fill two, three-year positions. Any individual who satisfies the qualifications and complies with the nominating procedures set forth below, should be prepared to serve a minimum of 24 to 36 days per year attending meetings on behalf of the cooperative.

Petitions are available at the headquarters in Blunt.

Should there be any questions concerning the bylaw procedures or if you would like to request a petition, feel free to call or stop in at the office. Petitions are due by Aug. 19, 2020.

Bylaws Governing Election of Directors

Section 3 - Qualifications: No person shall be eligible to become or remain a director or to hold any position of trust in the Cooperative who:

- A. is not a member and bona fide resident in the area served or to be served by the Cooperative; or
- B. is in any way employed or financially interested in a competing enterprise or a business selling electrical or plumbing fixtures or supplies to members of the Cooperative; or
- C. is an employee of the Cooperative.

Upon establishment of the fact that a director is holding office in violation of any of the foregoing provisions, the Board of Directors, by official motion shall remove such director from office. Nothing contained in this section shall affect in any manner whatever the validity of any action taken at any meetings of the Board of Directors.

Section 4 - Nominations: Any fifteen (15) or more members acting together may make nominations by petition not less than forty-five (45) days prior to the meeting and the Secretary shall post such nominations at the principal office of the Cooperative. The Secretary shall mail with the notice of the meeting or separately but at least ten (10) days before the date of the meeting at statement of the number of directors to be elected and the names and addresses of the candidates nominated by petition. There shall be no nominations from the floor unless no petition has been filed for a vacancy. In that event only, nominations shall be taken from the floor for that vacancy, and nominations shall not be closed until at least one minute has passed during which no additional nomination has been made. No member may nominate more than one candidate.

Statement of nondiscrimination

In accordance with Federal civil rights law and U.S. Department of Agriculture (USDA) civil rights regulations and policies, the USDA, its Agencies, offices, and employees, and institutions participating in or administering USDA programs are prohibited from discriminating based on race, color, national origin, religion, sex, gender identity (including gender expression), sexual orientation, disability, age, marital status, family/parental status, income derived from a public assistance program, political beliefs, or reprisal or retaliation for prior civil rights activity, in any program or activity conducted or funded by USDA (not all bases apply to all programs). Remedies and complaint filing deadlines vary by program or incident.

Person with disabilities who require alternative means of communication for program information (e.g., Braille, large print, audiotope, American Sign Language, etc.) should contact the responsible Agency or USDA's TARGET Center at (202)720-2600 (voice and TTY) or contact USDA through the Federal Relay Service at (800)877-8339. Additionally, program information may be made available in languages other than English.

To file a program discrimination complaint, complete the USDA Program Discrimination Complaint Form, AD-3027, found online at http://www.ascr.usda.gov/complaint_filing_cust.html and at any USDA office or write a letter addressed to USDA and provide in the letter all of the information requested in the form. To request a copy of the complaint form, call (866) 632-9992. Submit your completed form or letter to USDA by:

(1) mail: U.S. Department of Agriculture, Office of the Assistant Secretary for Civil Rights 1400 Independence Avenue, SW, Washington, D.C. 20250-9410; (2) fax: (202) 690-7442; or (3) email: program.intake@usda.gov
USDA is an equal opportunity provider, employer, and lender.

Winner of Question of the Month

The Question of the Month winners for the June 2020 publication were Dorn and Linda Barnes. They correctly answered the question, "When are director petitions due?"

The answer is Aug. 19, 2020. Congratulations for providing the correct answer!



Question of the Month!

This month's question is:

According to the Bureau of Labor Statistics Consumer Price Index (CPI), much did the cost of electricity increase from 2014-2019?"

Please submit your answer via e-mail to oahe@oaheelectric.com with the subject line reading: Question of the Month.

A winner will be chosen and a surprise gift will be sent to them.

Like Us!

You can now keep in touch with your cooperative on Facebook!



We will share with you the latest news, events, power outage updates, energy efficiency tips, money-saving rebates, load management information, legislative alerts, safety tips and much more!

We hope you "like" Oahe Electric Cooperative, Inc. on Facebook.

Cooperative Connections Card Program Vendors			
Automotive			
Graham Tire Company	605-224-8643	Pierre	Receive a 10% discount on regularly priced service work. Cannot be combined with any other offer.
Lamb Motor Company	800-952-2222	Onida	Receive a free alignment check with the purchase of 4 new tires.
Napa Auto and Truck Parts/Farnam's Genuine Parts, Inc.	605-224-8624	Pierre	Receive 10-50% off retail price.
Food/Convenience Store			
Branding Iron Bistro	605-494-3333	Pierre	Enjoy \$1 off your order. Limit one per visit.
Gator's Pizza Pasta and Subs	605-224-6262	Pierre	Purchase any large pizza at regular price and receive a FREE order of breadsticks.
Grey Goose Store	605-945-0794	Pierre	Receive a free 20 oz. fountain soda or coffee with the minimum of a \$30 gas or diesel purchase.
The Corner	605-258-2400	Onida	Buy one breakfast sandwich at regular price, get second half off.
Health/Fitness and Beauty			
Anytime Fitness	605-224-4011	Pierre	Receive a free two-week mini-membership.
Home/Garden			
The Pink Petal	605-224-1775	Pierre	10% discount on cash and carry purchases - fresh floral only.
Slumberland Furniture	605-945-1997	Pierre	20% off any regular priced Lazy Boy items. Excluding special orders.
Services			
Airtech Heating and Cooling	605-945-0160	Pierre	\$50 discount on any new heat pump OR \$15 discount on any service call.
Apryl's Animal House	605-224-9203	Pierre	10% off a grooming or boarding.
Inman's Water Technologies	605-224-5111	Pierre	Receive a 15% discount on the rental price of a water softener and/or reverse osmosis drinking water system by paying a year in advance. Receive 10% off of the purchase price of a new Water Softener or reverse osmosis drinking water system when you mention this ad. Payments made by credit cards do not qualify for discounts/specials.
Olson Plumbing Inc.	605-224-6436	Pierre	\$50 discount on any electric boiler, Marathon water heater, or fireplace.
Small Engine House	605-224-5815	Pierre	10% off parts and labor.
Sports/Recreation			
Teton River Traders Gun Shop LLC	605-224-1371	Ft. Pierre	2% discount. Payments made by credit cards do not qualify for discount.
Retail			
Fastenal	605-224-4060	Pierre	10% off of fasteners and 5% off on all other products.



Wild Springs Solar Farm will capture the sun's rays to produce electrical power for South Dakota homes, farms and businesses.

CATCHING RAYS

Wild Springs Solar Farm to Produce Renewable Power

Billy Gibson

Contributing Writer

Business leaders know that diversification is the key to containing costs and surviving sharp economic slumps over the long haul.

That's especially true when it comes to producing the power that keeps South Dakotans supplied with the juice they need to run their homes, farms, irrigation pumps, offices and shops.

Those utilities tasked with keeping the power flowing day and night look for diversification when determining the raw materials they'll use to generate electricity.

The ability to draw from a variety of available resources – coal, natural gas, solar, wind, hydro, biomass, etc. – stabilizes the production process and helps to levelize costs as market rates for any or all of these resources rise and fall over time. This “all-of-the-above” strategy, in turn, makes it easier for producers to engage in long-range forecasting, planning and purchasing for the ultimate benefit of consumers.

That's why it made perfect financial sense for Basin Electric to strike a power purchase agreement with Geronimo Energy, a renewable power generation developer based in Minnesota.

Geronimo Energy is in the early phases of constructing a solar farm called Wild Springs that is expected to generate 128 megawatts (MW) of clean renewable power. When construction is completed in 2022, the \$190 million facility will be the largest grid-scale solar installation in South Dakota.

According to Basin Electric officials, the not-for-profit wholesale power provider jumped at the opportunity to join forces with Geronimo Energy and expand its renewable power portfolio.

“We are excited about adding large-scale solar to our already



Vic Simmons, CEO of Rushmore Electric, delivers a presentation on the Wild Springs Solar Farm.

diverse generation mix,” said Basin CEO and General Manager Paul Sukut. “The board’s decision to add solar to our resource portfolio is to continue with our all-of-the-above strategy, as well as solar generation becoming a more economic energy source.”

Basin Electric transmits electricity to 141 member co-op distribution systems in nine states. It also transmits wholesale power to two South Dakota generation and transmission (G&T) co-ops: Rushmore Electric and East River Electric. Those two G&Ts then transmit the power supply to their respective distribution cooperatives. Rushmore Electric is the power provider for West River Electric, which is the closest distribution co-op in proximity to the solar farm. West River Electric owns more than 2,500 miles of power lines and poles in western South Dakota.

Wild Springs will be built on more than 1,000 acres within West River’s service area near the town of New Underwood in Pennington County and will help stabilize costs for thousands of

ratepayers throughout the region.

West River CEO/General Manager Dick Johnson said he's happy to have a new neighbor and that the project has garnered the support of community leaders as it will create roughly 150 construction jobs. But he said he's even happier for the members who will benefit from the renewable power generated by the solar farm.

The facility is expected to reduce carbon dioxide emissions by 85,000 metric tons annually, which is the equivalent of taking 18,000 cars off the road every year.

"We're excited that West River's service area will be home to the Wild Springs Solar Project," said Johnson. "This solar energy project will benefit our cooperative family, as well as our local communities. As not-for-profit co-ops that are owned by our members, everything we do goes back to the people we serve."

Johnson pointed out that the project is expected to produce \$17 million in economic benefits through its first 20 years in terms of tax revenue, job creation and contributions to charitable funds. The list of benefits also includes an education fund that plans to donate \$500,000 to local school districts.

Officials at Rushmore Electric said the power purchase agreement is a perfect fit in line with the cooperative's mission and long-term strategy.

"Our cooperative network is always looking to ensure we have a mix of power resources to meet the needs of our membership and renewable energy is an important part of that strategy," said General Manager Vic Simmons. "This project is an important strategic step as we look to the future in continuing our strong history of providing safe, affordable and reliable power."

Geronimo Energy recently completed the 200 MW Crocker Wind Farm in Clark County and also developed the Pierre Solar Project, a joint effort with the City of Pierre and Missouri River Energy Services in Hughes County.

Geronimo Energy President David Reamer said industry analysts often tend to doubt the viability of solar power in the region, but he said the Wild Springs project shows that consumers in more northern climates can also benefit from the renewable resource.

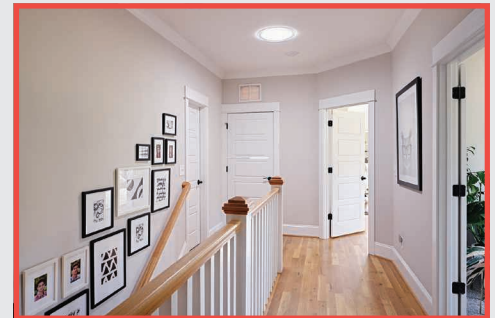
7 Efficient Home Improvement Projects to Help Save Money

The best home upgrades make spaces more livable and energy-efficient and are also cost-effective. Making energy-efficient improvements is a savvy way to save money on utility bills, curb energy consumption and add to the house's value. Consider a variety of home improvement projects, both big and small, that can reduce the financial burden of maintaining your home throughout the year and improve energy efficiency.

Add Insulation - A cost-effective way to save on heating and cooling bills is adding a layer of insulation in the attic where heat loss is typically greatest due to hot air rising. While many newer homes are adequately insulated, those that are several decades old (or older) may benefit from an upgrade in not only the attic but other common problem areas where air can escape such as basements, crawl spaces, fireplaces and ductwork.

Seal Doors and Windows - Windows and doors are common culprits for energy loss. While a complete replacement of doors and windows can be pricey, adding exterior caulk and weather stripping to fill in gaps where air can escape around these openings can make a noticeable difference for a fraction of the cost and make it cheaper to heat and cool your home.

Install Skylights - Skylights are a cost-effective option for transforming any room with natural light while also saving energy. For example, Sun Tunnel Skylights can be installed in 90 minutes and funnel natural light from the roof through the attic and into the room below with an aesthetic that resembles recessed lighting. Customizable with six diffuser film styles to complement interior design, the skylights can make a home more energy-efficient by reducing reliance on artificial lighting.



Reflective Window Film - When the sun shines through windows, it can heat up the home's interior quickly and trigger the air conditioner to turn on. Window coverings, such as blackout curtains, can help, but adding low-e reflective window film to your windowpanes, particularly southern-facing ones, can provide an additional shield from the sun and reduce energy costs.

Install a Programmable Thermostat - A programmable thermostat is an efficient way to control the climate inside your home. Today's smart thermostats not only let homeowners control temperatures from their smart devices but can also learn daily habits and adjust the temperature accordingly with no other manual adjustments necessary.

Replace Appliances - Because appliances like refrigerators and ovens are major energy users, investing in more efficient models provides both cost and energy savings. Additionally, homes more than 15 years old could benefit from updates to the air conditioner or heater as systems 15-20 years old or older may be candidates for replacement.

Ceiling Fans - In comparison to running your air conditioner consistently, the cost of running a ceiling fan (or several) is significantly less. Particularly on days that may not require cooling the entire house completely, fans can provide a gentle breeze and circulate air in the spaces you use most often. Simply adjust the switch to the counterclockwise position to ensure it's pushing air downward during warmer months.

For more information and home improvement ideas, visit whyskylights.com/livelifghter.

We're Bringing the Annual Meeting to You!

There are big changes coming to your annual meeting this year!

Due to the ongoing COVID-19 pandemic and the uncertainty of future public health mandates, Oahe Electric is adjusting your annual meeting structure to keep members, directors and employees safe.

Instead of the typical meal/meeting/door prizes format, Oahe Electric employees and directors will be set up at three locations – Onida, Blunt and Pierre.

Members will drive up, receive their voting ballot and a \$40 bill credit, listen to brief director candidate speeches either on their radio or loud speakers, cast their ballot and drive home!

We will certainly miss seeing and visiting with our members like we normally do, but with the future of this pandemic so uncertain, we had to make our decisions now so that we can move forward with our planning process.

Keep an eye on future *Cooperative Connections* newsletters, bill inserts and Facebook to learn more in the coming months.

If you have any questions, please call our office at 1-800-640-6243.

Stay Focused on Safety During Harvest



Matt Eldridge

Operations Manager
meldridge@oaheelectric.com

During harvest season, many farmers reap the benefits of advancement in agricultural technology. With the help of GPS auto-steer devices, farmers are able to decrease driver error and maximize productivity. Yet despite these advances, safety risks remain. To help farmers stay out of harm's way, Safe Electricity shares tips for a safe harvest.

GPS with auto-guidance provides farmers with real-time location data about a field, which can be used for crop planning, map making, navigation assistance and machinery guidance. During harvest, this technology allows drivers to have their hands off the steering wheel as the combine maneuvers itself through the field. Thanks to this technology, farmers can more easily and efficiently maintain accuracy even during low-light conditions, which enhances productivity.

"One critical part of safety around electricity is awareness," explains Kyla Kruse, communications director of the Safe Electricity program. "It's important to remember that farm machinery is vulnerable to hitting power lines because of its large size, height and extensions. Being aware of the location of overhead power lines and planning a safe equipment route can help reduce accidents."

In equipment with auto-guidance systems, less focus is needed on steering, which may lead some drivers to think that they do not need to be as aware of navigation issues. However, even while using a GPS with auto-steering, farm workers need to keep safety in mind and stay focused on their surroundings.

Putting safety first requires alertness, focus and knowledge of potential hazards and safety steps. Varying pass-to-pass accuracy levels and potential issues, such as power poles not being correctly plotted in the system, reinforce the need for drivers to stay focused on the location of the farm equipment while in the field and to be ready to take action if necessary.

Regardless of the technology used on the farm, keep the following electrical safety guidelines in mind:

- Use a spotter when operating large machinery near power lines.
- Keep equipment at least 10 feet from power lines – at all times, in all directions.
- Look up and use care when moving any equipment such as extending augers or raising the bed of grain trucks around power lines.
- Inspect the height of farm equipment to determine clearance.
- Always set extensions to the lowest setting when moving loads to prevent contact with overhead power lines. Grain augers should always be positioned horizontally before being moved.
- Never attempt to move a power line out of the way or raise it for clearance.
- If a power line is sagging or low, contact Oahe Electric.

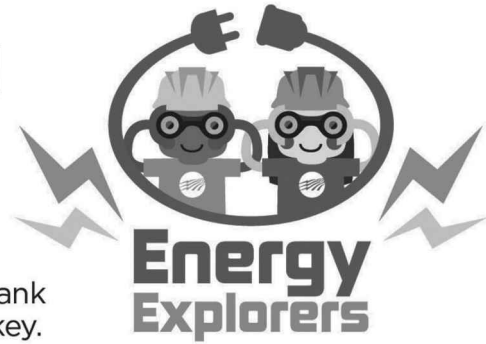
If your equipment does make contact with a power line, do not leave the cab. Immediately call 911, warn others to stay away and wait for the utility crew to cut the power.

The only reason to exit equipment that has come into contact with overhead lines is if the equipment is on fire, which is rare. However, if this is the case, jump off the equipment with your feet together and without touching the ground and machinery at the same time. Then, still keeping your feet together, hop to safety as you leave the area.

For more information on electrical safety, visit SafeElectricity.org.

POWER RESTORATION FILL-IN-THE-BLANK

When the power goes out, line crews work hard to restore service as quickly and safely as possible. Complete the fill-in-the-blank activity below to learn about the steps of power restoration. Use the word bank if you need help, and check your work in the answer key.



Word Bank:

distribution

transformer

transmission

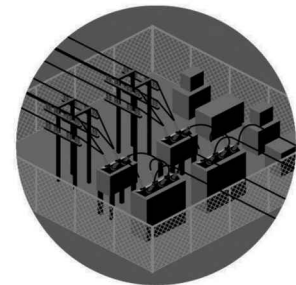
pads

substations



1. High-voltage _____ lines are the large towers and cables that supply power to the greatest number of consumer-members. They rarely fail, but if they do, they have to be repaired first.

2. Next, crews inspect distribution _____ for damage. They determine if the problem stems from the lines feeding into the equipment itself, or if the problem is further down the line.



3. If the problem still can't be pinpointed, _____ power lines are inspected. These are the lines you typically see on the side of the road that deliver power to communities.

4. If the power outage persists, supply lines (also known as tap lines) are inspected. These lines deliver power to transformers that are either mounted on poles or placed on _____ for underground electric service.



5. If your home remains without power, the service line between the _____ and your home may need repairs.

Answer Key: 1) transmission 2) substations 3) distribution 4) pads 5) transformer



GRAIN BIN SAFETY

Unusually wet year makes grain bin safety on the farm more important than ever

Susan Smith

Contributing Writer

Wet conditions during last year's harvest meant grain went into bins under conditions that aren't ideal.

Wet grain can cause crusting or bridging in bins. Producers try to scrape the crust away from the side, causing a landslide of grain sucking the producer in as it falls. Or they could be working in a bin not realizing they are standing on a bridge of grain that when it falls has nothing beneath it but air. This can also cause entrapment.

Many of these accidents happen in winter and early spring, said Beth Locken, director of safety and environmental at Agtegra Cooperative in Aberdeen. She calls that time period the second harvest when farmers are cleaning out bins for the coming year's crops. While South Dakota and North Dakota don't see the number of entrapment accidents as corn-belt states like Iowa and Illinois, grain bin entrapments are not picky, Locken said.

"We've already seen one (death in South Dakota) in 2020 already and that's too many," she said.

During the third week in February 2020, decreed by U.S. Secretary of Agriculture Sonny Perdue as National Grain Bin Safety Week, Christopher Bauman died at his farm near Elkton while emptying corn. Bauman had a wife and three children.

After Bauman died, Locken and Scott Wheelhouse, safety director of the Agfirst Farmers Cooperative in Aurora, began



talking about creating a local day-long seminar on grain bin safety. The morning would focus on a refresher course for first responders who already are trained to rescue someone trapped in a grain bin but maybe haven't had hands-on experience recently, Wheelhouse said. In the afternoon, producers from the area would get information on general grain bin safety and use of rescue equipment.

"We really want to emphasize we don't just want your business, we want your friendship," Wheelhouse said. "We want you alive."

AgTegra sold grain bin entry kits at cost to local producers this year, a service Wheelhouse would like to offer his customers as well. The kits sell for \$460 and include resources on how to use them.

"Mostly the benefit we get out of it is hoping we can educate the family and keep them safe," Locken said.

Purdue University releases an annual report on entrapment injuries and fatalities. The number increased by 9.8 percent in 2019. From 2017 to 2018 the number jumped 23 percent. In the last decade, 370 people died in grain bin accidents.

The number of grain bin accidents increased nearly 10 percent in 2019.



About 10 years ago, Agtegra donated to fire departments in its coverage area grain bin rescue tubes that fit around a submerged person. That includes about 70 departments in northeast and northwest North Dakota and areas along Highways 12 and 281 and I-90. Agtegra deployed a technical rescue team for the last 10 years.

Training paid off during a March grain entrapment.

The team membership and training is widespread for Agtegra employees and first responders.

"Immediate response is of the essence," Locken said. "If something happens on a farmer's bin site, they're not going to call AgTegra, they're going to call the fire department," Locken said.

That widespread training paid off during a March grain entrapment near Pierre.

"We were there providing guidance and additional equipment. We were inside the bin with the fire department just trying to get the victim out of there," she said. "We worked for about five hours and that was a successful response. Not all of them are like that, unfortunately."

The first rule of grain bin safety is not to go into the bin in the first place.

"We always say any time someone needs to go into a bin, stop and talk about it," Locken said. "Have absolutely more than one person there. Make sure the person has a harness and rope attached to the harness and to something attached to the bin that's not going to move."

Locken said turning off equipment like an auger is another good rule of thumb. That way grain isn't being pulled out of the bin as a person works in it.

John Keimig, SDSU Extension Youth Safety Field Specialist, conducts safety programs for 4-H youth. He educates children of producers so they know the rules and can keep an eye on their parents. Most producers know the risks of working around grain bins, he said, but might not consider them during the high pressure of a typical farm day.

"Adults know better," he said. "We get in a hurry. We don't always think and particularly in grain storage that can become very bad very quickly. By working together, we can help each other out if we have to go into a bin and we can save lives."

The risks of working around grain bins may be forgotten during the high pressure of an average work day on the farm.



State officials say the problem of meth addiction disproportionately affects women and Native American populations.

METH. WE TREAT IT.

Front Line Treatment Providers Stay Focused on Their Goal

By Billy Gibson

Contributing Writer

To a public growing desensitized to increasingly sensational news accounts, one particular police report stood out.

Probably because of the cattle prod.

Back in June, Sioux Falls police arrested a couple accused of using a cattle prod to discipline their four children, ages 11 to 17. The astonishing accusations also included the couple giving methamphetamine and marijuana to the youngsters in their charge.

It was another in a steady stream of stories serving as an indication of the widespread use of methamphetamine and the deleterious effects of drug abuse in the state.

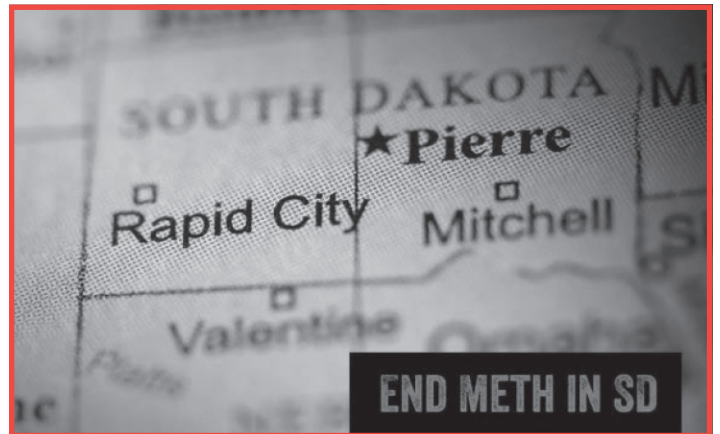
Meth, especially, is a social and public health menace that has not mysteriously disappeared since the coronavirus outbreak, although it has morphed a bit as the pandemic has spread.

State and federal officials report that the impact of the virus has brought both good news and bad news.

On one hand, the curtailing of international and national travel, the economic downturn and the tightening of borders have all combined to reduce the supply of the powerful drug on city and rural streets.

On the other hand, the street price for the drug is escalating due to increased demand and shortened supply. As those hooked on the drug seek any means of securing it and as general anxiety levels rise, officials fear that a jump in criminal activity is inevitable.

In Los Angeles, for example, meth prices doubled recently as narcotic traffic from Mexican cartels slowed down significantly.



Price increases were also seen in states like Virginia, West Virginia, New Mexico, Kentucky, Tennessee and many others.

While the world turned its attention to the coronavirus earlier this year and now braces for a second wave, others dedicated to battling meth abuse over the long haul have never steered their focus away from their goals.

A statewide campaign to raise awareness of the meth problem was launched last fall as officials began recognizing that the manufacture, distribution and consumption of meth was becoming a plague for far too many South Dakotans. The troubling trend was placing both rural towns and the larger population centers at risk.

The campaign was in response to disturbing figures that painted the picture of a national and international progression that was finally at the point of breaching the state's borders in record numbers.

For instance, officials reported that in 2018 more than 3,600 individuals were arrested in the state for possessing, transporting or



COVID-19 has not slowed the problem of meth addiction

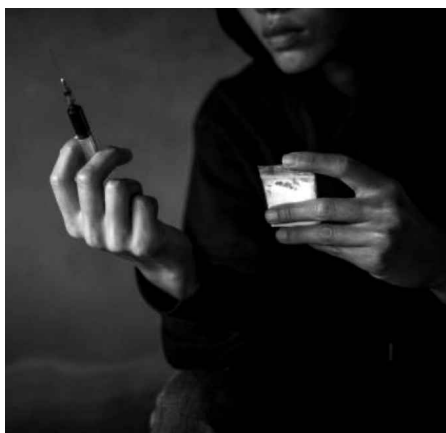
distributing a collective 100 lbs. of methamphetamine. The Centers for Disease Control proclaimed that meth was taking the lives of more South Dakotans than any other illegal drug and that twice as many teens from 12 to 17 years old were using meth compared to the national average.

Additionally, 83 percent of court admissions for controlled substances in 2019 involved meth, as the state saw a 200 percent increase in people seeking treatment with the primary diagnosis of meth addiction between 2014 and 2018.

Meanwhile, law enforcement seized 24 lbs. of meth in the Rapid City area in 2018, over 20 lbs. in Sioux Falls, and almost 1 lb. in Pierre. It takes just .0003 lb. of the drug to cause a fatal overdose. From January to August of 2019, there were 2,243 meth-related arrests across 50 counties. In 2002, that number was just 467.

More recently, figures show that meth is impacting Native American and female populations at a disproportionate level.

For instance, officials report that more than 90 percent of inmates at the South Dakota Women's Prison in Pierre are substance abusers. Overall, roughly



“Don't think you can't get help, because there are many options out there.”

Carol Regier

one-third of those inmates incarcerated in the state prison system are there because of some form of drug addiction.

Recently, the female inmates have campaigned to push for more programs to help addicts within the system.

Inmate Heather Shooter, who belongs to the Cheyenne River Sioux tribe, is one of several convicts who have been instrumental in an initiative called Sober is Sacred, in which inspirational speakers, performers and other guests call for additional counseling and treatment programs to help those hooked on meth. The program follows a similar one launched at the Mike Durfee State Prison for men in Springfield called Fathers Against Meth.

Shooter said that when her time is served this fall she plans to enter the Full Circle Substance Abuse Center in Rapid City and spread the message of a drug-free life.

Dave Flute, the state's Secretary of Tribal Affairs and former Sisseton-Wahpeton Sioux Tribal chairman, has described the meth plague as having reached epidemic proportions on the state's reservations. He spoke last fall at the second State-Tribal Meth Summit in Mission and assured the audience that the governor's administration is working closely with Native American tribes to combat the problem.

Carol Regier, CEO of the Keystone Treatment Center with facilities in Canton and Sioux Falls, said her program often works with tribal communities in South Dakota and surrounding states. She echoed Flute's comments that the governor's office has been deeply engaged.

“We've had discussions with the governor and the state has been very supportive of our work, going back to the Rounds administration,” she said, noting, “But we did make up our own catch phrase: ‘Meth. We Treat It.’”

She pegged meth abuse as “by far” the most toxic culprit when it comes to addiction and the social maladies that

spring from it.

“Besides alcohol, meth is our number one problem. It's very addictive and caustic and people who get hooked rarely defeat it without qualified help,” she said.

Regier said the in-patient program offered at Keystone typically lasts a month to 45 days and includes components of the 12-step Narcotics Anonymous plan. It also



focuses on spiritual, physical and mental health, she said. After therapy, patients are supported and encouraged to participate in after-care and continued counseling.

Keystone has 126 beds, and Regier said there is a steady stream of patients seeking treatment for their addiction. The pace hasn't slowed with the coronavirus.

“There was a period where it seemed people were afraid to come in, but they've started to come in now,” she said. “We've seen an escalation in alcohol and drug abuse during the pandemic as people are having to deal with loneliness, joblessness, personal relationships and other drastic changes in their lives and in the country.”

From her vantage point standing on the front lines of the drug addiction battle, Regier strikes a positive tone. She encourages those who feel they need treatment to get it. She assures that most treatment plans are covered by medical insurance and that grants and other resources are available to help addicts break free from the grip of addictions.

“Don't think you can't get help, because there are many options out there. We hear heartbreaking stories, but on the good side we see people who have turned their lives around,” she said. “For all of us committed to helping drug addicts get well, we have the same commitment: getting people back to normal so they can live healthier, more fulfilling lives. Treatment works.”

Register to Win!

Bring this coupon and mailing label to the Touchstone Energy® Cooperatives booth at the South Dakota State Fair to win a prize!

Your Phone Number: _____
Your E-mail Address: _____

Note: Please make sure to call ahead to verify the event is still being held.

September 3-5

South Dakota State Fair:
Perfect Vision of Fun,
1060 3rd St. SW, Huron, SD
800-529-0900
www.sdstatefair.com

July 21-25

98th Annual Days of '76 PRCA
Rodeo, Arena, Deadwood,
SD, 1-888-838-BULL,
www.DAYSOF76.com

July 26

15th Annual Car Show
Langford, SD, 10 a.m. - 2 p.m.
605-493-6597

July 31-August 1

Senior Games, Yankton,
SD, Contact Kristi Hauer at
605-665-4685

July 31-August 1

Plein Air & Arts in the Garden,
Wessington Springs, SD,
605-354-3826

August 1

Rockin' Ribfest BBQ
Competition, Wessington
Springs, SD, 605-505-1135

August 1

Foothills Classic, Wessington
Springs, SD, 605-350-1687

August 1, 22

The Murder of Miss Kitty
Comedy Mystery Dinner
Theatre, Holiday Inn Express
& Suites, Deadwood, SD,
605-580-5799

August 8-9

Threshing Show, Twin Brooks,
SD, www.threshingshow.com



August 8-10:
Red Power Round Up
Fairgrounds, Huron, SD
605-460-0197

Photo courtesy: South Dakota Department of Agriculture

August 8-10

Red Power Round Up,
Fairgrounds, Huron, SD,
605-460-0197

August 9

Online Only Bechyn Czech
Festival, Online Concert,
7 p.m., Bechyn,
Minn., 320-522-1218
www.facebook.com/Bechyn-
MinnesotaWorld

August 14-16

Astronomy Festival, Badlands
National Park, Wall, SD,
605-433-5241

August 21-22

Harvest Festival, Elkton, SD,
605-524-2681

August 22

World of Outlaw Sprint Car
Races plus Wissota MWM,
Dakota State Fair Speedway,
Huron, SD, 605-352-4848

September 7

Hidewood Valley Steam
Threshing Show, 1 p.m.,
47326 183rd Ave., Clear Lake,
SD, 605-881-8405

September 12-13

Fall Harvest Festival,
Delmont, SD, 605-928-3792,
www.twinriversoldiron.org

September 13

20th Annual Antique Tractor
and Car Parade, 1 p.m.,
Farmer, SD, 605-239-4498

September 25-27

Coal Springs Threshing
Bee Featuring Massy Harris
Tractors, Meadow, SD,
605-788-2229

September 26

10th Annual ROCS Fall
Festival, 9 a.m. to 2 p.m.,
Springfield, SD,
605-464-7379

September 26

Wheelin' to Wall, Wall
Community Center, Wall, SD

October 7-8

Energize! Explore Innovative
Rural Communities
Conference, Milbank, SD,
<https://extension.sdstate.edu>

To have your event listed on this page, send complete information, including date, event, place and contact to your local electric cooperative. Include your name, address and daytime telephone number. Information must be submitted at least eight weeks prior to your event. Please call ahead to confirm date, time and location of event.